



Community Centered Schools: The Case for Joint Use

Mikaela Randolph

Assistant Policy Analyst

Choose Health LA initiative

Los Angeles County Department of Public Health





Eight Outcome Objectives

- 1) Increase access to healthy food & beverages in 8 cities
- 2) Develop food procurement policies in 5 county agencies
- 3) Improve the nutritional content of school meals in 4 districts
- 4) Implement nutrition & physical activity policies in 60 preschools
- 5) Promote breastfeeding in county departments & other large employers
- 6) Increase teacher capacity to implement phys. ed. requirements
- 7) Strengthen joint use policies & establish joint use agreements
- 8) Adopt land use policies to increase pedestrian activity & biking





Overview of the program

- Funding received from the Centers for Disease Control and Prevention (CDC)
- Los Angeles County Department of Public Health (DPH) partnered with the Los Angeles County Office of Education (LACOE)
- LACOE partnered with seven (7) school districts to provide physical education professional development training





Overview of the program

- Physical Education professional development addresses the students and what happens during the school day
- Joint Use policy and agreements address the physical activity needs of the community during non-school hours





Joint Use in Los Angeles County

- ABC Unified
- Compton Unified
- El Monte City
- Los Angeles Unified
- Mountain View
- Pasadena Unified
- Pomona Unified

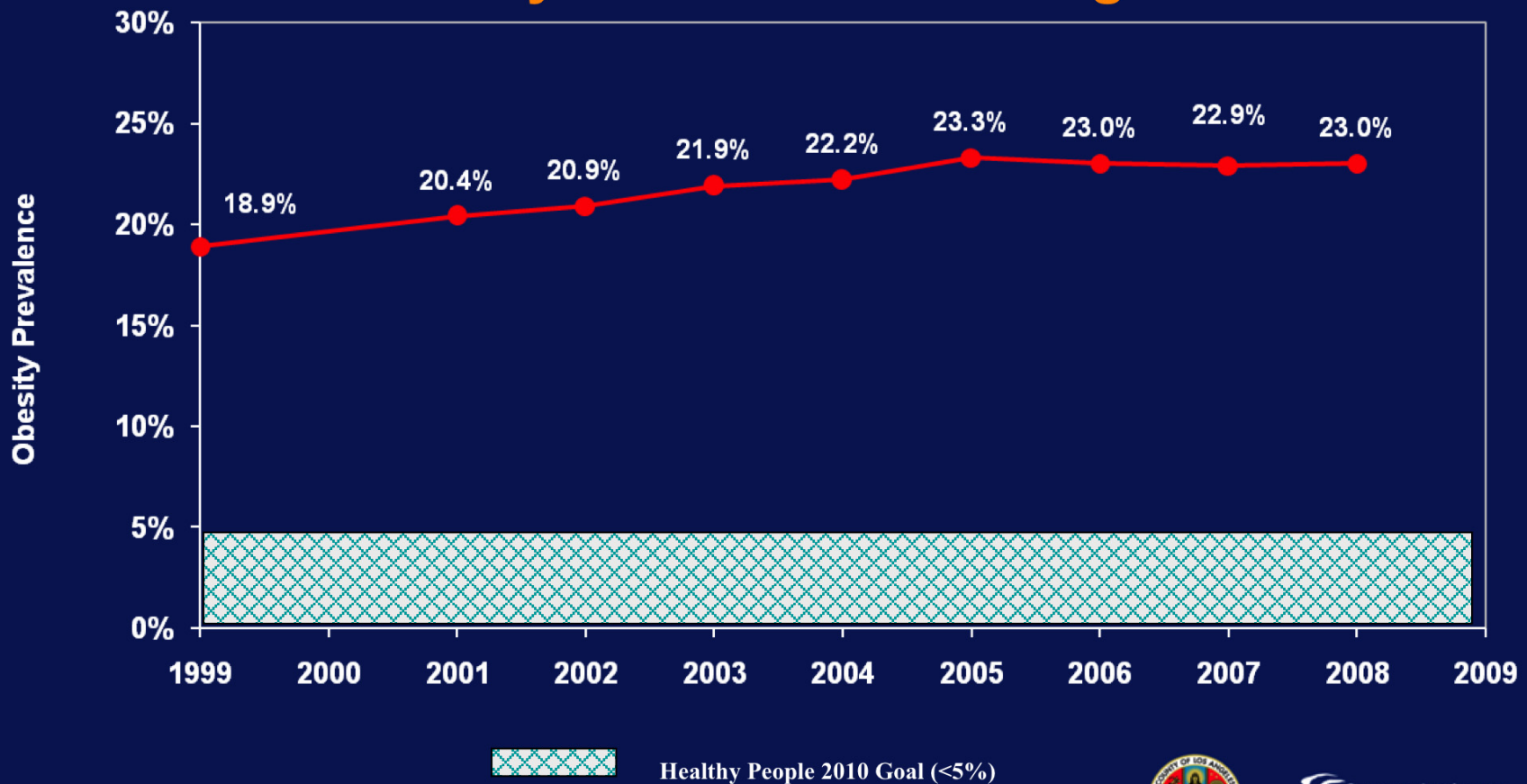


Diamond Ranch High School, Pomona Unified





Prevalence of Obesity Among Los Angeles County School Children California Physical Fitness Testing 1999-2008





Cities/Communities in LA County with Lowest and Highest Childhood Obesity Rates, 2008

Top 10*

Bottom 10*

City/Community Name	Obesity Prevalence (%)	Rank of Economic Hardship (1 - 128)	City/Community Name	Obesity Prevalence (%)	Rank of Economic Hardship (1 - 128)
Manhattan Beach	3.4	2	West Athens	30.6	94
Calabasas	5.0	8	South Gate	30.7	110
Hermosa Beach	5.1	1	Florence-Graham	31.0	128
Agoura Hills	5.3	10	West Whittier-Los Nietos	31.1	81
Beverly Hills	5.4	19	West Carson	31.4	56
Malibu	5.9	4	Vincent	32.2	69
Palos Verdes Estates	7.3	5	East Los Angeles	32.9	117
San Marino	7.8	15	Hawaiian Gardens	33.4	107
Rolling Hills Estate	8.4	9	South El Monte	34.5	111
La Canada Flintridge	8.5	18	Walnut Park	38.7	113
Average 10 lowest	6.2%		Average 10 highest	32.7%	

*Table excludes cities/communities where number of students with BMI data < 500.

Source: California Physical Fitness Testing Program, California Department of Education. Includes 5th, 7th, and 9th graders enrolled in LA County public schools.





Joint Use Defined

What is Joint Use?

- A **written agreement** that offers a way for school districts to open their facilities for community use.
- Unofficial **community-use agreements** also exist where school facilities are unlocked during non-school hours for general public recreational use.





Difference between Joint Use Policy and Joint Use Agreements

Policy

- Outlines vision for joint partnerships
- Provides district directive for joint use that goes beyond the Civic Center Act
- Assigns management responsibilities for joint use at the district
- Remains in place, even if a joint use agreement ends

Agreements

- Assigns roles and responsibilities of named partners
- Provides details for implementation
- Contains site-level details



CHOOSE!
HEALTHIA!



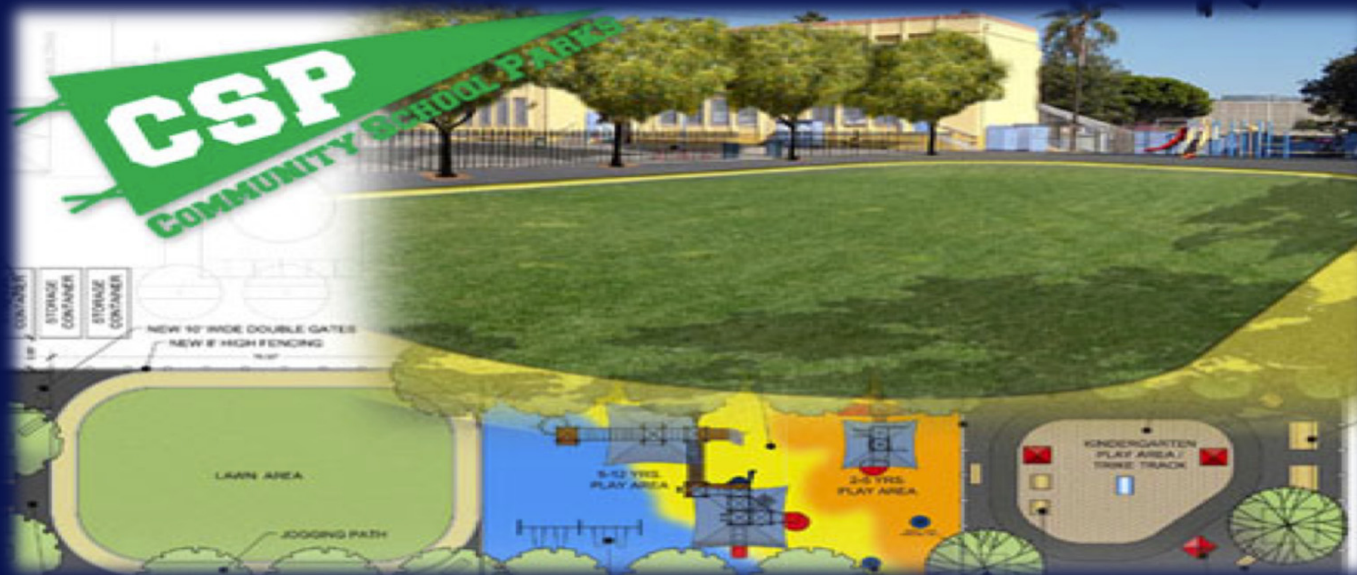
COUNTY OF LOS ANGELES
Public Health

**CHOOSE!
HEALTHIA!**

Community School Models

Community School Parks – People for Parks

Increased access to physical activity opportunities among adults and children in the community during non-school hours



COUNTY OF LOS ANGELES
Public Health

**CHOOSE!
HEALTH, CA!**

Grand Opening Community School Park Trinity Elementary School



COUNTY OF LOS ANGELES
Public Health

**CHOOSE!
HEALTHY!**

Community School Models

Compton Unified – Carver Elementary School

Partnerships with Los Angeles County Parks and Recreation, Lenny Krayzelburg, and Compton Unified to form a swim program open to adults and students



COUNTY OF LOS ANGELES
Public Health



Community School Models

Pomona Unified – Palomares Academy

The School District and the site administrators operate the fields like a park: the fields are open to the community for recreation purposed during non-school hours.

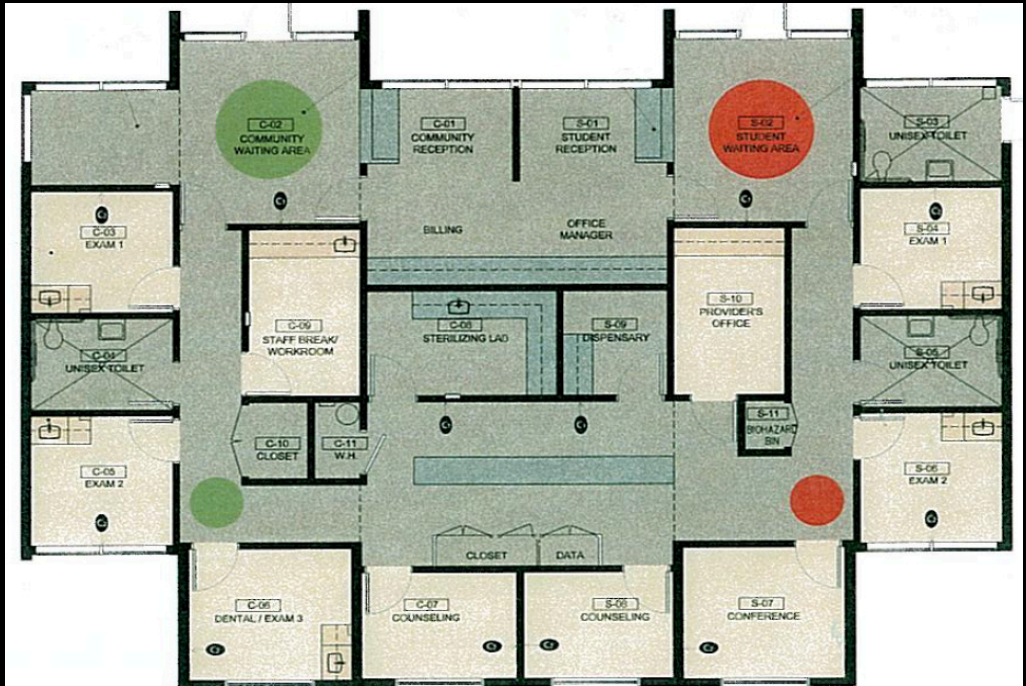


CHOOSE!
HEALTHIA!

Community School Models



*Coming 2012: FREMONT HIGH SCHOOL
WELLNESS CENTER & COMMUNITY GARDEN*



COUNTY OF LOS ANGELES
Public Health

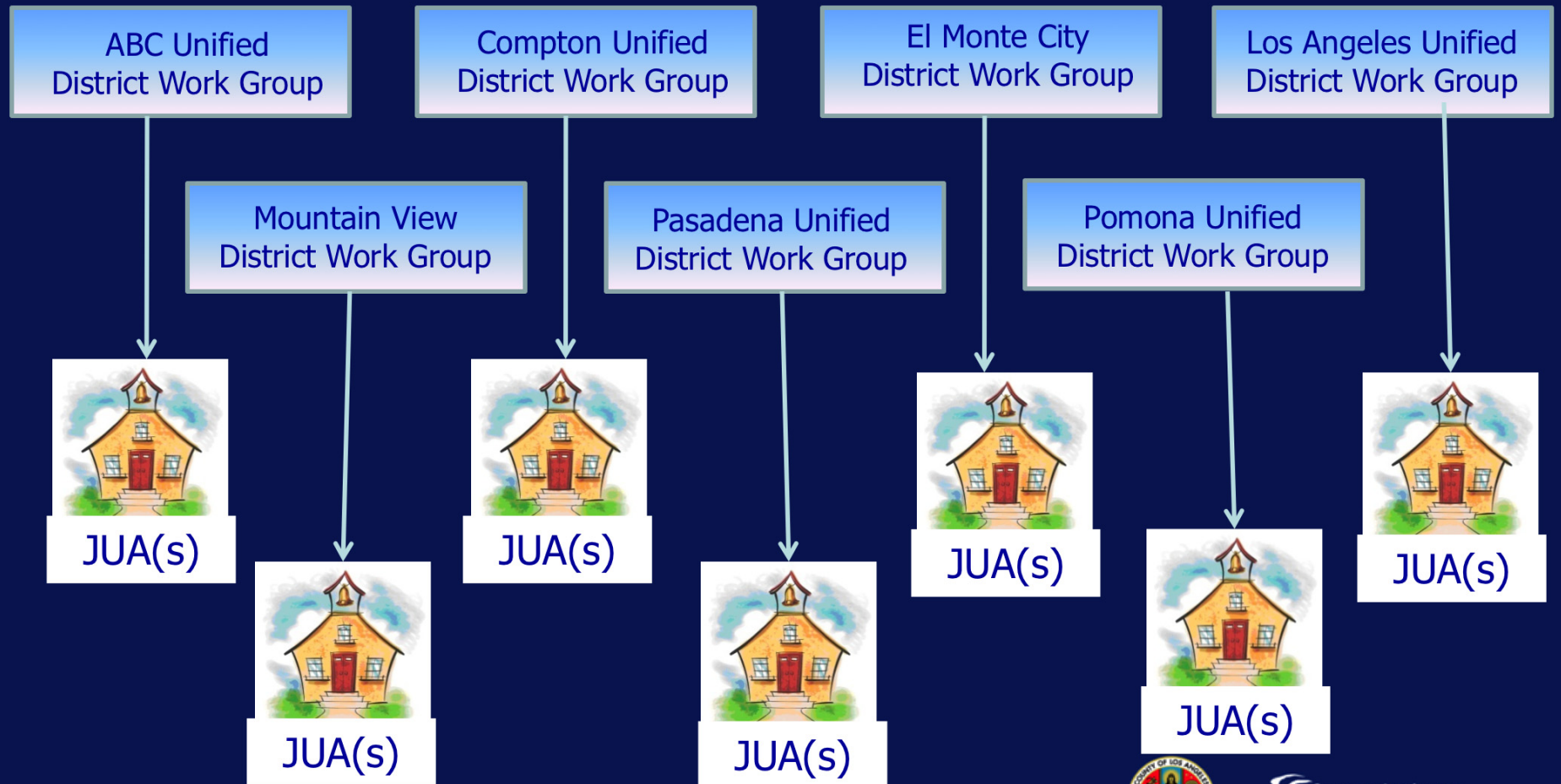


Highlights of Joint Use in LA County

- **Joint Use Moving People to Play (JUMPP) Task Force**
 - Quarterly meeting
 - Broad range of stakeholders; a coalition that supports joint use efforts in Los Angeles County
- **Joint Use Steering Committee**
 - Represents key joint use stakeholders
(i.e. Parks and Recreation, School Superintendents, PTA and Community-Based Organizations)



JUMPP: *Joint Use Moving People to Play*





Community Schools and the Role of Joint Use

- Increases physical activity access in communities that are deemed park poor
- Addresses concerns of safety in the communities, specifically in urban communities where local gangs may threaten the safety of park goers



**CHOOSE!
HEALTHIA!**

Joint Use Resources

Statewide Joint Use Efforts: Promote healthy lifestyle choice through active living

www.jointuse.org



CHOOSE! HEALTH LA.COM



Contact: Mikaela Randolph

mirandolph@ph.lacounty.gov, 213.351.1937



COUNTY OF LOS ANGELES
Public Health